

Lecture 5: Section 2.4: Continuity

*Lecturer: Sarah Arpin***Today's Goal: Learn the definition of a continuous function, and some important theorems of continuity.**

Logistics:

Check-in Friday, Written Homework due Thursday by 6pm

We are starting this section Wednesday (possibly Tuesday?), but we will not finish it until Friday.

Warm-Up 5.1 Evaluate $\lim_{x \rightarrow 1} \frac{x-1}{\sqrt{x}-1}$.

5.1 Definition

Definition 5.2 A function $f(x)$ is continuous at a value $x = a$ if

$$\lim_{x \rightarrow a} f(x) = f(a).$$

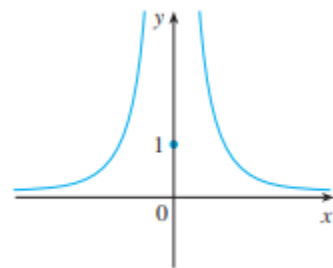
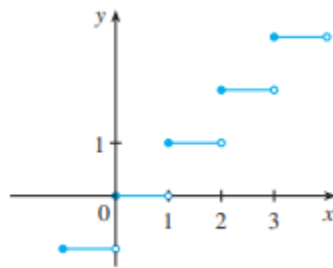
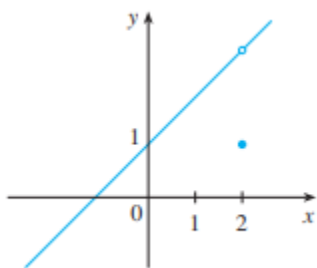
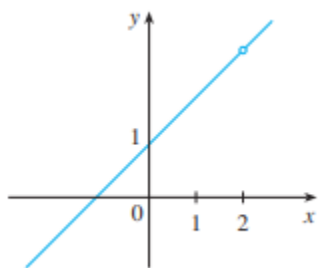
There is a lot hidden in this definition!

- $\lim_{x \rightarrow a} f(x)$ exists! We need the left and right limits to agree for this to be true.
- $f(a)$ needs to exist! a needs to be in the domain of the function for this to happen.
- The above two quantities need to be equal.

If $f(x)$ does not satisfy this definition at the value a , we say $f(x)$ is **discontinuous at a** , or $f(x)$ has a **discontinuity at a** .

5.2 Discontinuities: From a Graph

Where are the following functions continuous? Where are they discontinuous? Can we classify the types of discontinuities these different graphs display? There are three kinds of discontinuity: Jump, Removeable, and Infinite.



5.3 Discontinuities: From an Equation

5.3.1 Domain

This will have a similar feel to finding the domain of a function given by an equation. Recall, you need to check things like **denominators** and **even radicals** (square roots, 4th roots, etc.).

Example 5.3 Find the domain of the function:

$$r(t) = \frac{(\sqrt{t+1})(\sqrt[3]{t-6})}{t^2 + 3t - 4}$$

5.3.2 Discontinuities

Example 5.4 Consider the function:

$$h(x) = \begin{cases} \frac{x^2-1}{x^3+8} & , \text{ if } x \neq -2 \\ 4 & , \text{ if } x = -2 \end{cases}$$

Where is $h(x)$ discontinuous? Where is $h(x)$ continuous? Use interval notation to answer.

Example 5.5 Where is the following function continuous?

$$h(t) = \frac{1}{x}$$

Example 5.6 Where is the following function continuous?

$$f(x) = \begin{cases} \frac{x^2-x-6}{x+2} & , \text{ if } x \neq -2 \\ -5 & , \text{ if } x = -2 \end{cases}$$

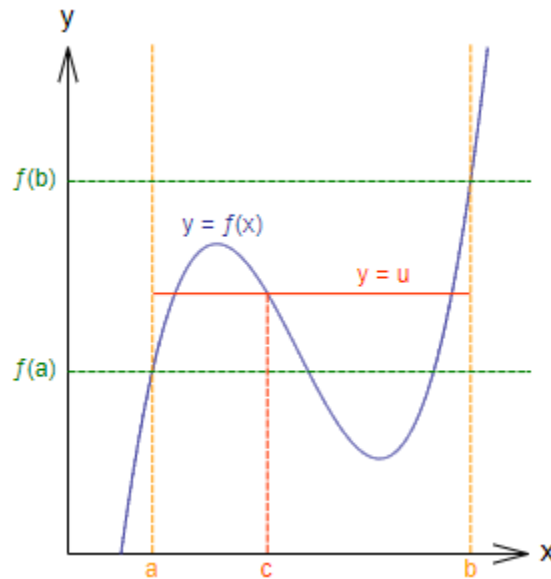
Definition 5.7 We say that a function is **continuous on the left at a** if $\lim_{x \rightarrow a^-} f(x) = f(a)$. We likewise define being continuous on the right.

Example 5.8 Is $[[x]]$ continuous on the left and/or right at $a = 5$?

Theorem 5.9 *The following types of functions are continuous at every value in their domain:*

- *polynomials*
- *rational functions*
- *root functions*
- *trig functions*
- *exponential functions*
- *log functions*

Theorem 5.10 (The Intermediate Value Theorem) *Suppose f is continuous on the closed interval $[a, b]$ (of x -values). If u is any number between $f(a)$ and $f(b)$, then there exists an x -value c in (a, b) such that $f(c) = u$.*



(Image from Kpengboy / Public domain on the Wikipedia article for Intermediate Value Theorem)

Example 5.11 Use the intermediate value theorem to show that the function $f(x)$ as below has a root between $x = 0$ and $x = 1$:

$$f(x) = \sqrt[3]{x} + x - 1$$

Example 5.12 Use the intermediate value theorem to show that the following equation has a solution in the interval $(1, 2)$.

$$\sin(x) = x^2 - x$$