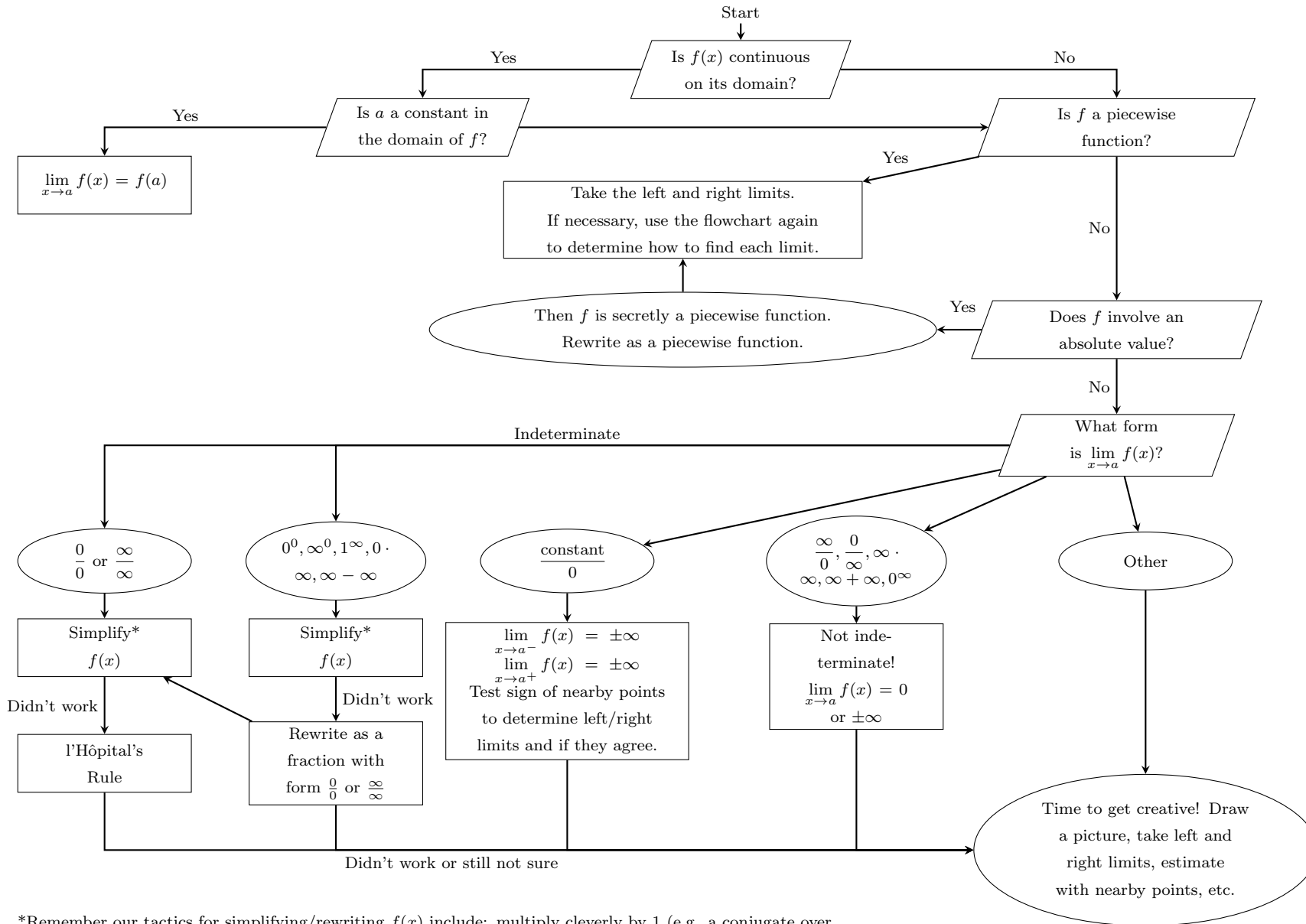


Let $f(x)$ be a given function. This flowchart is useful for solving problems that involve finding $\lim_{x \rightarrow a} f(x)$ where a is a constant or $\pm\infty$.

We cannot include every single possibility. This chart is meant to be a useful guide, but it is no substitute for your own understanding and critical thinking!



*Remember our tactics for simplifying/rewriting $f(x)$ include: multiply cleverly by 1 (e.g. a conjugate over itself), divide numerator and denominator by a power of x , factor and cancel, combine fractions, etc.