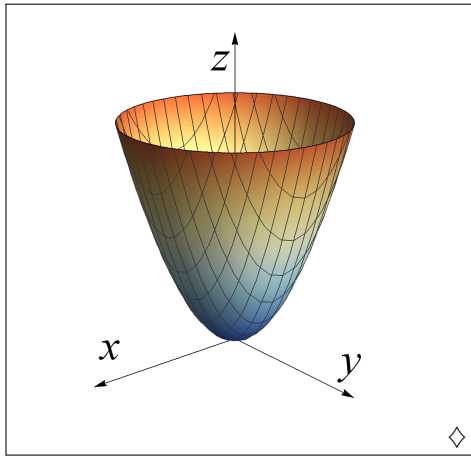
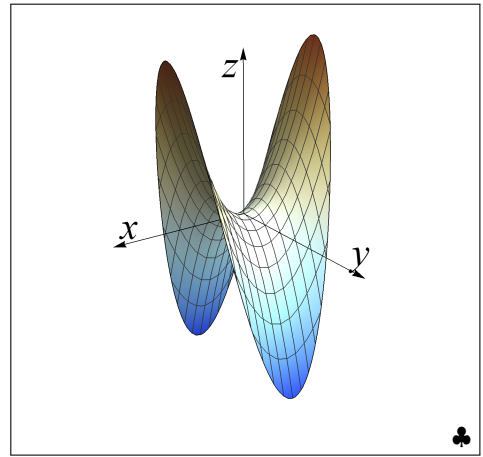


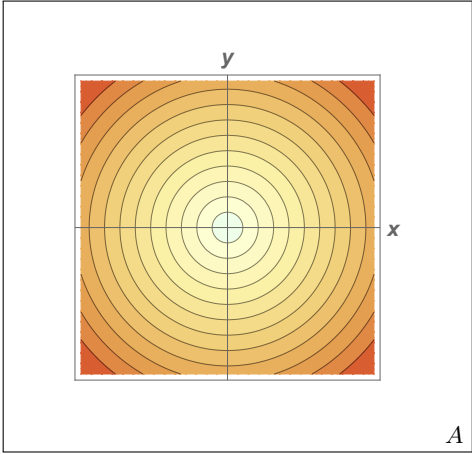
♥



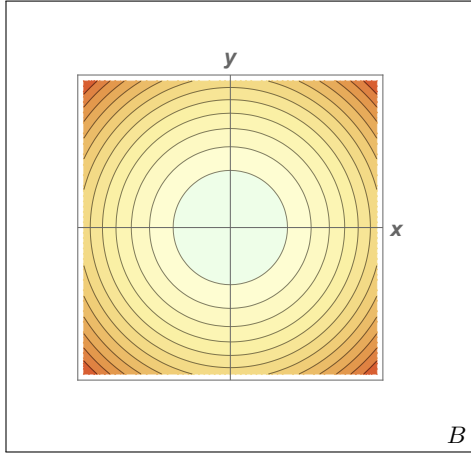
◇



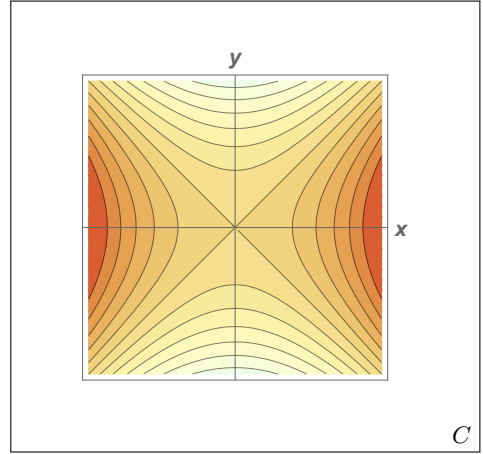
♣



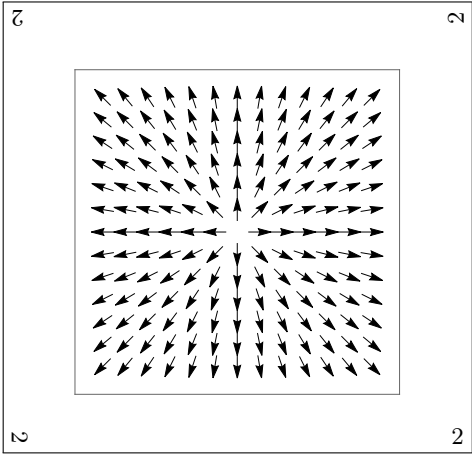
A



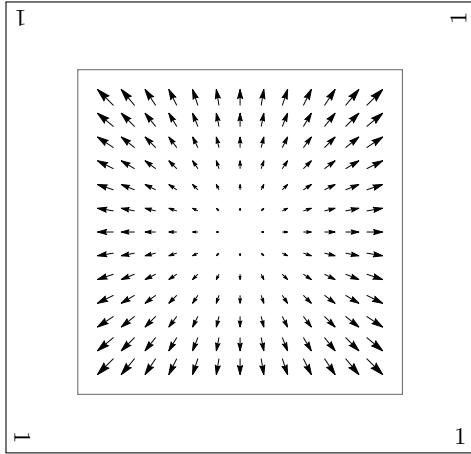
B



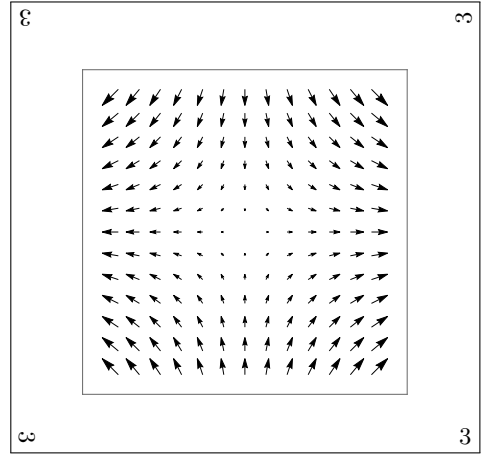
C



2



1



3

Potential function
 $f(x, y) = \sqrt{x^2 + y^2}$

c

Potential function
 $f(x, y) = x^2 + y^2$

b

Potential function
 $f(x, y) = x^2 - y^2$

a

Gradient vector field
 $\mathbf{F}(x, y) = \nabla f = \left\langle \frac{x}{\sqrt{x^2 + y^2}}, \frac{y}{\sqrt{x^2 + y^2}} \right\rangle$

γ

Gradient vector field
 $\mathbf{F}(x, y) = \nabla f = \langle 2x, 2y \rangle$

α

Gradient vector field
 $\mathbf{F}(x, y) = \nabla f = \langle 2x, -2y \rangle$

β